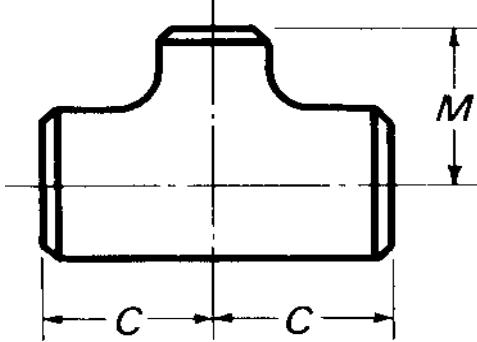


FITTINGS

ASME B 16.9

Straight Tees

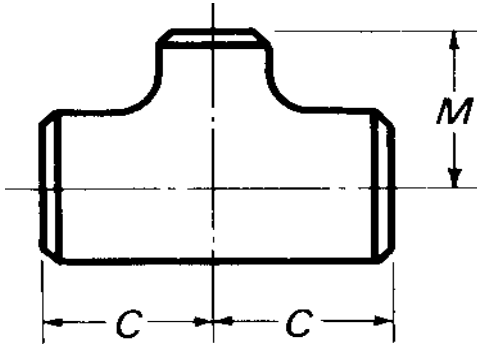


Nominal Pipe Size (NPS)	Outside Diameter Pipe	Wall thickness of Pipe Schedule / mm				C = M	Theoretical Weights kg / piece					
		Inch	mm	5 S	10 S		40 S	80 S	mm	5 S	10 S	40 S
1/2"	21.3			1.65	2.11	2.77	3.73	25	0.05	0.07	0.08	0.11
3/4"	26.7			1.65	2.11	2.87	3.91	29	0.08	0.10	0.13	0.16
1"	33.4			1.65	2.77	3.38	4.55	38	0.13	0.21	0.25	0.32
1.1/4"	42.2			1.65	2.77	3.56	4.85	48	0.21	0.34	0.42	0.56
1.1/2"	48.3			1.65	2.77	3.68	5.08	57	0.28	0.46	0.60	0.81
2"	60.3			1.65	2.77	3.91	5.54	64	0.39	0.65	0.89	1.23
2.1/2"	73.0			2.11	3.05	5.16	7.01	76	0.72	1.02	1.68	2.22
3"	88.9			2.11	3.05	5.49	7.62	86	0.98	1.40	2.45	3.31
3.1/2"	101.6			2.11	3.05	5.74	8.08	95	1.23	1.76	3.23	4.43
4"	114.3			2.11	3.05	6.02	8.56	105	1.53	2.19	4.21	5.84
5"	141.3			2.77	3.40	6.55	9.53	124	2.89	3.54	6.66	9.47
6"	168.3			2.77	3.40	7.11	10.97	143	3.96	4.84	9.89	14.90
8"	219.1			2.77	3.76	8.18	12.70	178	6.37	8.60	18.33	27.85
10"	273.0			3.40	4.19	9.27	12.70	216	11.74	14.42	31.31	42.34
12"	323.9			3.96	4.57	9.53	12.70	254	19.03	21.92	45.00	59.36
14"	355.6			3.96	4.78			279	22.98	27.67		
16"	406.4			4.19	4.78			305	30.03	34.20		
18"	457.0			4.19	4.78			343	38.01	43.31		
20"	508.0			4.78	5.54			381	53.52	61.94		
22"	559.0			4.78	5.54			419	64.82	91.60		
24"	610.0			5.54	6.35			432	83.06	995.08		

FIT TACKS

ASME B 16.9

Reducing Tees

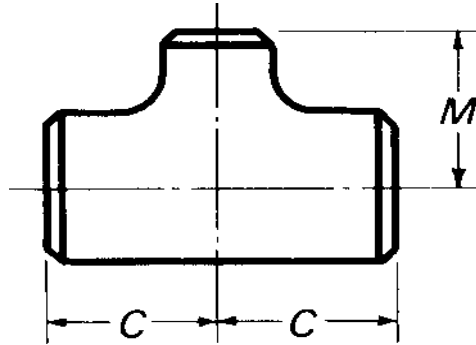


Nominal Pipe Size (NPS)	Outside Diameter Pipe		Wall Thickness of pipe Schedule / mm.								Length in mm C	Length in mm M
	Large End	Small End	Large End	Small End	Large End	Small End	Large End	Small End	Large End	Small End		
Inch	mm	mm	Schedule 5S		Schedule 10S		Schedule 40S		Schedule 80S			
1/2 x 1/2 x 3/8	21.3	17.1			2.11	1.65	2.77	2.31	3.73	3.20	25	25
1/2 x 1/2 x 1/4	21.3	13.7			2.11	1.65	2.77	2.24	3.73	3.02	25	25
3/4 x 3/4 x 1/2	26.7	21.3	1.65	1.65	2.11	2.11	2.87	2.77	3.91	3.73	29	29
3/4 x 3/4 x 3/8	26.7	17.1			2.11	1.65	2.87	2.31	3.91	3.20	29	29
1 x 1 x 3/4	33.4	26.7	1.65	1.65	2.77	2.11	3.38	2.87	4.55	3.91	38	38
1 x 1 x 1/2	33.4	21.3	1.65	1.65	2.77	2.11	3.38	2.77	4.55	3.73	38	38
1.1/4x1.1/4x 1	42.2	33.4	1.65	1.65	2.77	2.77	3.56	3.38	4.85	4.55	48	48
1.1/4x1.1/4x3/4	42.2	26.7	1.65	1.65	2.77	2.11	3.56	2.87	4.85	3.91	48	48
1.1/4x1.1/4x1/2	42.2	21.3	1.65	1.65	2.77	2.11	3.56	2.77	4.85	3.73	48	48
1.1/2x1.1/2x1.1/4	48.3	42.2	1.65	1.65	2.77	2.77	3.68	3.56	5.08	4.85	57	57
1.1/2x1.1/2x1	48.3	33.4	1.65	1.65	2.77	2.77	3.68	3.38	5.08	4.55	57	57
1.1/2x1.1/2x3/4	48.3	26.7	1.65	1.65	2.77	2.11	3.68	2.87	5.08	3.91	57	57
1.1/2x1.1/2x1/2	48.3	21.3	1.65	1.65	2.77	2.11	3.68	2.77	5.08	3.73	57	57
2 x 2 x 1.1/2	60.3	48.3	1.65	1.65	2.77	2.77	3.91	3.68	5.54	5.08	64	60
2 x 2 x 1.1/4	60.3	42.2	1.65	1.65	2.77	2.77	3.91	3.56	5.54	4.85	64	57
2 x 2 x 1	60.3	33.4	1.65	1.65	2.77	2.77	3.91	3.38	5.54	4.55	64	51
2 x 2 x 3/4	60.3	26.7	1.65	1.65	2.77	2.11	3.91	2.87	5.54	3.91	64	44
2.1/2x2.1/2x2	73.0	60.3	2.11	1.65	3.05	2.77	5.16	3.91	7.01	5.54	76	70
2.1/2x2.1/2x1.1/2	73.0	48.3	2.11	1.65	3.05	2.77	5.16	3.68	7.01	5.08	76	67
2.1/2x2.1/2x1.1/4	73.0	42.2	2.11	1.65	3.05	2.77	5.16	3.56	7.01	4.85	76	64
2.1/2x2.1/2x1	73.0	33.4	2.11	1.65	3.05	2.77	5.16	3.38	7.01	4.55	76	57

FIT TACKS

ASME B 16.9

Reducing Tees

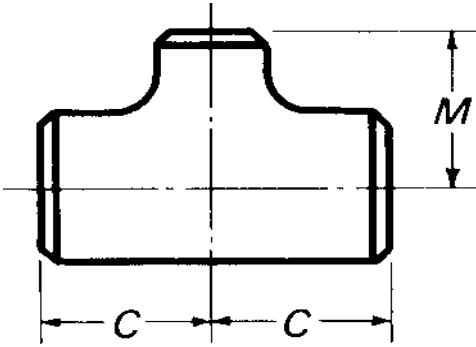


Nominal Pipe Size (NPS)	Outside Diameter Pipe		Wall Thickness of pipe Schedule / mm.								Length in mm C	Length in mm M
	Large End	Small End	Large End	Small End	Large End	Small End	Large End	Small End	Large End	Small End		
Inch	mm	mm	Schedule 5S		Schedule 10S		Schedule 40S		Schedule 80S			
3 x3 x2 1/2	88.9	73.0	2.11	2.11	3.05	3.05	5.49	5.16	7.62	7.01	86	83
3 x3 x2	88.9	60.3	2.11	1.65	3.05	2.77	5.49	3.91	7.62	5.54	86	76
3 x3 x1 1/2	88.9	48.3	2.11	1.65	3.05	2.77	5.49	3.68	7.62	5.08	86	73
3 x3 x1 1/4	88.9	42.2	2.11	1.65	3.05	2.77	5.49	3.56	7.62	4.85	86	70
3 1/2 x3 1/2 x3	101.6	88.9	2.11	2.11	3.05	3.05	5.74	5.49	8.08	7.62	95	92
3 1/2 x3 1/2 x2 1/2	101.6	73.0	2.11	2.11	3.05	3.05	5.74	5.16	8.08	7.01	95	89
3 1/2 x3 1/2 x2	101.6	60.3	2.11	1.65	3.05	2.77	5.74	3.91	8.08	5.54	95	83
3 1/2 x3 1/2 x1 1/2	101.6	48.3	2.11	1.65	3.05	2.77	5.74	3.68	8.08	5.08	95	79
4 x4 x3 1/2	114.3	101.6	2.11	2.11	3.05	3.05	6.02	5.74	8.56	8.08	105	102
4 x4 x3	114.3	88.9	2.11	2.11	3.05	3.05	6.02	5.49	8.56	7.62	105	98
4 x4 x2 1/2	114.3	73.0	2.11	2.11	3.05	3.05	6.02	5.16	8.56	7.01	105	95
4 x4 x2	114.3	60.3	2.11	1.65	3.05	2.77	6.02	3.91	8.56	5.54	105	89
4 x4 x1 1/2	114.3	48.3	2.11	1.65	3.05	2.77	6.02	3.68	8.56	5.08	105	86
5 x5 x4	141.3	114.3	2.77	2.11	3.40	3.05	6.55	6.02	9.53	8.56	124	117
5 x5 x3 1/2	141.3	101.6	2.77	2.11	3.40	3.05	6.55	5.74	9.53	8.08	124	114
5 x5 x3	141.3	88.9	2.77	2.11	3.40	3.05	6.55	5.49	9.53	7.62	124	111
5 x5 x2 1/2	141.3	73.0	2.77	2.11	3.40	3.05	6.55	5.16	9.53	7.01	124	108
5 x5 x2	141.3	60.3	2.77	1.65	3.40	2.77	6.55	3.91	9.53	5.54	124	105
6 x6 x5	168.3	141.3	2.77	2.77	3.40	3.40	7.11	6.55	10.97	9.53	143	137
6 x6 x4	168.3	114.3	2.77	2.11	3.40	3.05	7.11	6.02	10.97	8.56	143	130
6 x6 x3 1/2	168.3	101.6	2.77	2.11	3.40	3.05	7.11	5.74	10.97	8.08	143	127
6 x6 x3	168.3	88.9	2.77	2.11	3.40	3.05	7.11	5.49	10.97	7.62	143	124
6 x6 x2 1/2	168.3	73.0	2.77	2.11	3.40	3.05	7.11	5.16	10.97	7.01	143	121

FITTINGS

ASME B 16.9

Reducing Tees

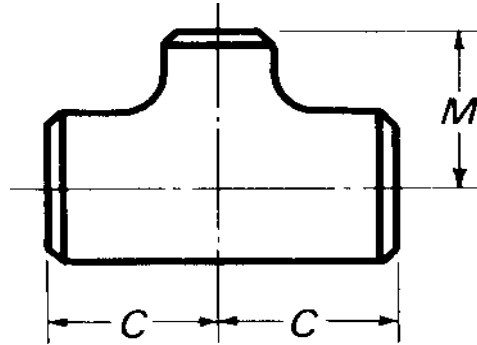


Nominal Pipe Size (NPS)	Outside Diameter Pipe		Wall Thickness of pipe Schedule / mm.								Lengh in mm C	Lengh in mm M
	Large End	Small End	Large End	Small End	Large End	Small End	Large End	Small End	Large End	Small End		
Inch	mm	mm	Schedule 5S		Schedule 10S		Schedule 40S		Schedule 80S			
8 x8 x6	219.1	168.3	2.77	2.77	3.76	3.40	8.18	7.11	12.70	10.97	178	168
8 x8 x5	219.1	141.3	2.77	2.77	3.76	3.40	8.18	6.55	12.70	9.53	178	162
8 x8 x4	219.1	114.3	2.77	2.11	3.76	3.05	8.18	6.02	12.70	8.56	178	156
8 x8 x31.2	219.1	101.6	2.77	2.11	3.76	3.05	8.18	5.74	12.70	8.08	178	152
10 x10 x8	273.1	219.1	3.40	2.77	4.19	3.76	9.27	8.18	12.70	12.70	216	203
10 x10 x6	273.1	168.3	3.40	2.77	4.19	3.40	9.27	7.11	12.70	10.97	216	194
10 x10 x5	273.1	141.3	3.40	2.77	4.19	3.40	9.27	6.55	12.70	9.53	216	191
10 x10 x4	273.1	114.3	3.40	2.11	4.19	3.05	9.27	6.02	12.70	8.56	216	184
12 x12 x10	323.9	273.1	3.96	3.40	4.57	4.19	9.53	9.27	12.70	12.70	254	241
12 x12 x8	323.9	219.1	3.96	2.77	4.57	3.76	9.53	8.28	12.70	12.70	254	229
12 x12 x6	323.9	168.3	3.96	2.77	4.57	3.40	9.53	7.11	12.70	10.97	254	219
12 x12 x5	323.9	141.3	3.96	2.77	4.57	3.40	9.53	6.55	12.70	9.53	254	216
14 x14 x12	355.6	323.9	3.96	3.96	4.78	4.57					279	270
14 x14 x10	355.6	273.1	3.96	3.40	4.78	4.19					279	257
14 x14 x8	355.6	219.1	3.96	2.77	4.78	3.76					279	248
14 x14 x6	355.6	168.3	3.96	2.77	4.78	3.40					279	238
16 x16 x14	406.4	355.6	4.19	3.96	4.78	4.78					305	305
16 x16 x12	406.4	323.9	4.19	3.96	4.78	4.57					305	295
16 x16 x10	406.4	273.1	4.19	3.40	4.78	4.19					305	283
16 x16 x8	406.4	219.1	4.19	2.77	4.78	3.76					305	273
16 x16 x6	406.4	168.3	4.19	2.77	4.78	3.40					305	264

FITTINGS

ASME B 16.9

Reducing Tees

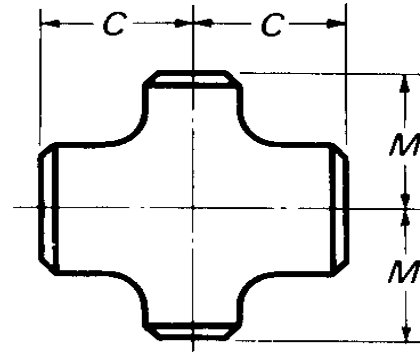


Nominal Pipe Size (NPS)	Outside Diameter Pipe		Wall Thickness of pipe Schedule / mm.								Length in mm C	Length in mm M
	Large End	Small End	Large End	Small End	Large End	Small End	Large End	Small End	Large End	Small End		
Inch	mm	mm	Schedule 5S		Schedule 10S		Schedule 40S		Schedule 80S			
18 x18 x16	457.0	406.4	4.19	4.19	4.78	4.78					343	330
18 x18 x14	457.0	355.6	4.19	3.96	4.78	4.78					343	330
18 x18 x12	457.0	323.9	4.19	3.96	4.78	4.57					343	321
18 x18 x10	457.0	273.1	4.19	3.40	4.78	4.19					343	308
18 x18 x8	457.0	219.1	4.19	2.77	4.78	3.76					343	298
20 x20 x18	508.0	457.0	4.78	4.19	5.54	4.78					381	368
20 x20 x16	508.0	406.4	4.78	4.19	5.54	4.78					381	356
20 x20 x14	508.0	355.6	4.78	3.96	5.54	4.78					381	356
20 x20 x12	508.0	323.9	4.78	3.96	5.54	4.57					381	346
20 x20 x10	508.0	273.1	4.78	3.40	5.54	4.19					381	333
20 x20 x8	508.0	219.1	4.78	2.77	5.54	3.76					381	324
22 x22 x20	559.0	508.0	4.78	4.78	5.54	5.54					419	406
22 x22 x18	559.0	457.0	4.78	4.19	5.54	4.78					419	394
22 x22 x16	559.0	406.4	4.78	4.19	5.54	4.78					419	381
22 x22 x14	559.0	355.6	4.78	3.96	5.54	4.78					419	381
22 x22 x12	559.0	323.9	4.78	3.96	5.54	4.57					419	371
22 x22 x10	559.0	273.1	4.78	3.40	5.54	4.19					419	359
24 x24 x22	610.0	559.0	5.54	4.78	6.35	5.54					423	432
24 x24 x20	610.0	508.0	5.54	4.78	6.35	5.54					432	432
24 x24 x18	610.0	457.0	5.54	4.19	6.35	4.78					432	419
24 x24 x16	610.0	406.4	5.54	4.19	6.35	4.78					432	406
24 x24 x14	610.0	355.6	5.54	3.96	6.35	4.78					432	406
24 x24 x12	610.0	323.9	5.54	3.96	6.35	4.57					432	397
24 x24 x10	610.0	273.1	5.54	3.40	6.35	4.19					432	384

FITTINGS

ASME B 16.9

Straight Crosses

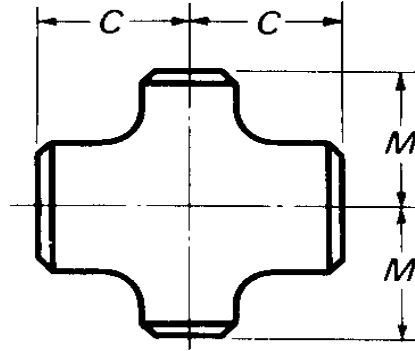


Nominal Pipe Size (NPS)	Outside Diameter Pipe	Wall thickness of Pipe Schedule / mm				C = M	Theoretical Weights kg / piece				
		Inch	mm	5 S	10 S		40 S	80 S	mm	5 S	10 S
1/2"	21.3		1.65	2.11	2.77	3.73	25	0.05	0.07	0.08	0.11
3/4"	26.7		1.65	2.11	2.87	3.91	29	0.08	0.10	0.13	0.16
1"	33.4		1.65	2.77	3.38	4.55	38	0.13	0.21	0.25	0.32
1.1/4"	42.2		1.65	2.77	3.56	4.85	48	0.21	0.34	0.42	0.56
1.1/2"	48.3		1.65	2.77	3.68	5.08	57	0.28	0.46	0.60	0.81
2"	60.3		1.65	2.77	3.91	5.54	64	0.39	0.65	0.89	1.23
2.1/2"	73.0		2.11	3.05	5.16	7.01	76	0.72	1.02	1.68	2.22
3"	88.9		2.11	3.05	5.49	7.62	86	0.98	1.40	2.45	3.31
3.1/2"	101.6		2.11	3.05	5.74	8.08	95	1.23	1.76	3.23	4.43
4"	114.3		2.11	3.05	6.02	8.56	105	1.53	2.19	4.21	5.84
5"	141.3		2.77	3.40	6.55	9.53	124	2.89	3.54	6.66	9.47
6"	168.3		2.77	3.40	7.11	10.97	143	3.96	4.84	9.89	14.90
8"	219.1		2.77	3.76	8.18	12.70	178	6.37	8.60	18.33	27.85
10"	273.0		3.40	4.19	9.27	12.70	216	11.74	14.42	31.31	42.34
12"	323.9		3.96	4.57	9.53	12.70	254	19.03	21.92	45.00	59.36
14"	355.6		3.96	4.78			279	22.98	27.67		
16"	406.4		4.19	4.78			305	30.03	34.20		
18"	457.0		4.19	4.78			343	38.01	43.31		
20"	508.0		4.78	5.54			381	53.52	61.94		
22"	559.0		4.78	5.54			419	64.82	91.60		
24"	610.0		5.54	6.35			432	83.06	995.08		

FITTINGS

ASME B 16.9

Reducing Crosses

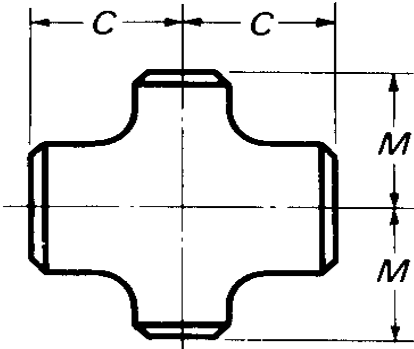


Nominal Pipe Size (NPS)	Outside Diameter Pipe		Wall Thickness of pipe Schedule / mm.								Length in mm	Length in mm
	Large End	Small End	Large End	Small End	Large End	Small End	Large End	Small End	Large End	Small End		
Inch	mm	mm	Schedule 5S		Schedule 10S		Schedule 40S		Schedule 80S			
1/2 x 1/2 x 3/8	21.3	17.1			2.11	1.65	2.77	2.31	3.73	3.20	25	25
1/2 x 1/2 x 1/4	21.3	13.7			2.11	1.65	2.77	2.24	3.73	3.02	25	25
3/4 x 3/4 x 1/2	26.7	21.3	1.65	1.65	2.11	2.11	2.87	2.77	3.91	3.73	29	29
3/4 x 3/4 x 3/8	26.7	17.1			2.11	1.65	2.87	2.31	3.91	3.20	29	29
1 x 1 x 3/4	33.4	26.7	1.65	1.65	2.77	2.11	3.38	2.87	4.55	3.91	38	38
1 x 1 x 1/2	33.4	21.3	1.65	1.65	2.77	2.11	3.38	2.77	4.55	3.73	38	38
1.1/4x1.1/4x 1	42.2	33.4	1.65	1.65	2.77	2.77	3.56	3.38	4.85	4.55	48	48
1.1/4x1.1/4x3/4	42.2	26.7	1.65	1.65	2.77	2.11	3.56	2.87	4.85	3.91	48	48
1.1/4x1.1/4x1/2	42.2	21.3	1.65	1.65	2.77	2.11	3.56	2.77	4.85	3.73	48	48
1.1/2x1.1/2x1.1/4	48.3	42.2	1.65	1.65	2.77	2.77	3.68	3.56	5.08	4.85	57	57
1.1/2x1.1/2x1	48.3	33.4	1.65	1.65	2.77	2.77	3.68	3.38	5.08	4.55	57	57
1.1/2x1.1/2x3/4	48.3	26.7	1.65	1.65	2.77	2.11	3.68	2.87	5.08	3.91	57	57
1.1/2x1.1/2x1/2	48.3	21.3	1.65	1.65	2.77	2.11	3.68	2.77	5.08	3.73	57	57
2 x 2 x 1.1/2	60.3	48.3	1.65	1.65	2.77	2.77	3.91	3.68	5.54	5.08	64	60
2 x 2 x 1.1/4	60.3	42.2	1.65	1.65	2.77	2.77	3.91	3.56	5.54	4.85	64	57
2 x 2 x 1	60.3	33.4	1.65	1.65	2.77	2.77	3.91	3.38	5.54	4.55	64	51
2 x 2 x 3/4	60.3	26.7	1.65	1.65	2.77	2.11	3.91	2.87	5.54	3.91	64	44
2.1/2x2.1/2x2	73.0	60.3	2.11	1.65	3.05	2.77	5.16	3.91	7.01	5.54	76	70
2.1/2x2.1/2x1.1/2	73.0	48.3	2.11	1.65	3.05	2.77	5.16	3.68	7.01	5.08	76	67
2.1/2x2.1/2x1.1/4	73.0	42.2	2.11	1.65	3.05	2.77	5.16	3.56	7.01	4.85	76	64
2.1/2x2.1/2x1	73.0	33.4	2.11	1.65	3.05	2.77	5.16	3.38	7.01	4.55	76	57

FITTACKS

ASME B 16.9

Reducing Crosses

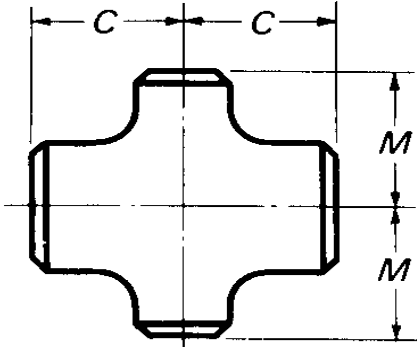


Nominal Pipe Size (NPS)	Outside Diameter Pipe		Wall Thickness of pipe Schedule / mm.								Length in mm C	Length in mm M
	Large End	Small End	Large End	Small End	Large End	Small End	Large End	Small End	Large End	Small End		
Inch	mm	mm	Schedule 5S		Schedule 10S		Schedule 40S		Schedule 80S			
3 x3 x21/2	88.9	73.0	2.11	2.11	3.05	3.05	5.49	5.16	7.62	7.01	86	83
3 x3 x2	88.9	60.3	2.11	1.65	3.05	2.77	5.49	3.91	7.62	5.54	86	76
3 x3 x11/2	88.9	48.3	2.11	1.65	3.05	2.77	5.49	3.68	7.62	5.08	86	73
3 x3 x11/4	88.9	42.2	2.11	1.65	3.05	2.77	5.49	3.56	7.62	4.85	86	70
31/2x31/2x3	101.6	88.9	2.11	2.11	3.05	3.05	5.74	5.49	8.08	7.62	95	92
31/2x31/2x21/2	101.6	73.0	2.11	2.11	3.05	3.05	5.74	5.16	8.08	7.01	95	89
31/2x31/2x2	101.6	60.3	2.11	1.65	3.05	2.77	5.74	3.91	8.08	5.54	95	83
31/2x31/2x11/2	101.6	48.3	2.11	1.65	3.05	2.77	5.74	3.68	8.08	5.08	95	79
4 x4 x31/2	114.3	101.6	2.11	2.11	3.05	3.05	6.02	5.74	8.56	8.08	105	102
4 x4 x3	114.3	88.9	2.11	2.11	3.05	3.05	6.02	5.49	8.56	7.62	105	98
4 x4 x21/2	114.3	73.0	2.11	2.11	3.05	3.05	6.02	5.16	8.56	7.01	105	95
4 x4 x2	114.3	60.3	2.11	1.65	3.05	2.77	6.02	3.91	8.56	5.54	105	89
4 x4 x11/2	114.3	48.3	2.11	1.65	3.05	2.77	6.02	3.68	8.56	5.08	105	86
5 x5 x4	141.3	114.3	2.77	2.11	3.40	3.05	6.55	6.02	9.53	8.56	124	117
5 x5 x31/2	141.3	101.6	2.77	2.11	3.40	3.05	6.55	5.74	9.53	8.08	124	114
5 x5 x3	141.3	88.9	2.77	2.11	3.40	3.05	6.55	5.49	9.53	7.62	124	111
5 x5 x21/2	141.3	73.0	2.77	2.11	3.40	3.05	6.55	5.16	9.53	7.01	124	108
5 x5 x2	141.3	60.3	2.77	1.65	3.40	2.77	6.55	3.91	9.53	5.54	124	105
6 x6 x5	168.3	141.3	2.77	2.77	3.40	3.40	7.11	6.55	10.97	9.53	143	137
6 x6 x4	168.3	114.3	2.77	2.11	3.40	3.05	7.11	6.02	10.97	8.56	143	130
6 x6 x31/2	168.3	101.6	2.77	2.11	3.40	3.05	7.11	5.74	10.97	8.08	143	127
6 x6 x3	168.3	88.9	2.77	2.11	3.40	3.05	7.11	5.49	10.97	7.62	143	124
6 x6 x21/2	168.3	73.0	2.77	2.11	3.40	3.05	7.11	5.16	10.97	7.01	143	121

FITTACKS

ASME B 16.9

Reducing Crosses

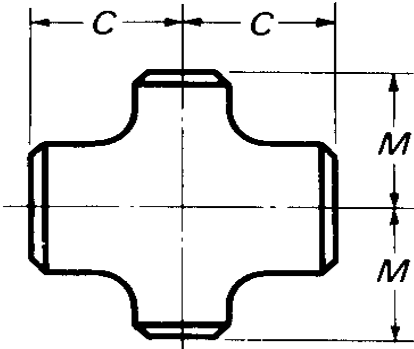


Nominal Pipe Size (NPS)	Outside Diameter of pipe		Wall Thickness of pipe Schedule / mm.								Lengh in mm C	Lengh in mm M
	Large End	Small End	Large End	Small End	Large End	Small End	Large End	Small End	Large End	Small End		
Inch	mm	mm	Schedule 5S		Schedule 10S		Schedule 40S		Schedule 80S			
8 x8 x6	219.1	168.3	2.77	2.77	3.76	3.40	8.18	7.11	12.70	10.97	178	168
8 x8 x5	219.1	141.3	2.77	2.77	3.76	3.40	8.18	6.55	12.70	9.53	178	162
8 x8 x4	219.1	114.3	2.77	2.11	3.76	3.05	8.18	6.02	12.70	8.56	178	156
8 x8 x31.2	219.1	101.6	2.77	2.11	3.76	3.05	8.18	5.74	12.70	8.08	178	152
10 x10 x8	273.1	219.1	3.40	2.77	4.19	3.76	9.27	8.18	12.70	12.70	216	203
10 x10 x6	273.1	168.3	3.40	2.77	4.19	3.40	9.27	7.11	12.70	10.97	216	194
10 x10 x5	273.1	141.3	3.40	2.77	4.19	3.40	9.27	6.55	12.70	9.53	216	191
10 x10 x4	273.1	114.3	3.40	2.11	4.19	3.05	9.27	6.02	12.70	8.56	216	184
12 x12 x10	323.9	273.1	3.96	3.40	4.57	4.19	9.53	9.27	12.70	12.70	254	241
12 x12 x8	323.9	219.1	3.96	2.77	4.57	3.76	9.53	8.28	12.70	12.70	254	229
12 x12 x6	323.9	168.3	3.96	2.77	4.57	3.40	9.53	7.11	12.70	10.97	254	219
12 x12 x5	323.9	141.3	3.96	2.77	4.57	3.40	9.53	6.55	12.70	9.53	254	216
14 x14 x12	355.6	323.9	3.96	3.96	4.78	4.57					279	270
14 x14 x10	355.6	273.1	3.96	3.40	4.78	4.19					279	257
14 x14 x8	355.6	219.1	3.96	2.77	4.78	3.76					279	248
14 x14 x6	355.6	168.3	3.96	2.77	4.78	3.40					279	238
16 x16 x14	406.4	355.6	4.19	3.96	4.78	4.78					305	305
16 x16 x12	406.4	323.9	4.19	3.96	4.78	4.57					305	295
16 x16 x10	406.4	273.1	4.19	3.40	4.78	4.19					305	283
16 x16 x8	406.4	219.1	4.19	2.77	4.78	3.76					305	273
16 x16 x6	406.4	168.3	4.19	2.77	4.78	3.40					305	264

FIT TACKS

ASME B 16.9

Reducing Crosses



Nominal Pipe Size (NPS)	Outside Diameter Pipe		Wall Thickness of pipe Schedule / mm.								Length in mm C	Length in mm M
	Large End	Small End	Large End	Small End	Large End	Small End	Large End	Small End	Large End	Small End		
Inch	mm	mm	Schedule 5S		Schedule 10S		Schedule 40S		Schedule 80S			
18 x18 x16	457.0	406.4	4.19	4.19	4.78	4.78					343	330
18 x18 x14	457.0	355.6	4.19	3.96	4.78	4.78					343	330
18 x18 x12	457.0	323.9	4.19	3.96	4.78	4.57					343	321
18 x18 x10	457.0	273.1	4.19	3.40	4.78	4.19					343	308
18 x18 x8	457.0	219.1	4.19	2.77	4.78	3.76					343	298
20 x20 x18	508.0	457.0	4.78	4.19	5.54	4.78					381	368
20 x20 x16	508.0	406.4	4.78	4.19	5.54	4.78					381	356
20 x20 x14	508.0	355.6	4.78	3.96	5.54	4.78					381	356
20 x20 x12	508.0	323.9	4.78	3.96	5.54	4.57					381	346
20 x20 x10	508.0	273.1	4.78	3.40	5.54	4.19					381	333
20 x20 x8	508.0	219.1	4.78	2.77	5.54	3.76					381	324
22 x22 x20	559.0	508.0	4.78	4.78	5.54	5.54					419	406
22 x22 x18	559.0	457.0	4.78	4.19	5.54	4.78					419	394
22 x22 x16	559.0	406.4	4.78	4.19	5.54	4.78					419	381
22 x22 x14	559.0	355.6	4.78	3.96	5.54	4.78					419	381
22 x22 x12	559.0	323.9	4.78	3.96	5.54	4.57					419	371
22 x22 x10	559.0	273.1	4.78	3.40	5.54	4.19					419	359
24 x24 x22	610.0	559.0	5.54	4.78	6.35	5.54					423	432
24 x24 x20	610.0	508.0	5.54	4.78	6.35	5.54					432	432
24 x24 x18	610.0	457.0	5.54	4.19	6.35	4.78					432	419
24 x24 x16	610.0	406.4	5.54	4.19	6.35	4.78					432	406
24 x24 x14	610.0	355.6	5.54	3.96	6.35	4.78					432	406
24 x24 x12	610.0	323.9	5.54	3.96	6.35	4.57					432	397
24 x24 x10	610.0	273.1	5.54	3.40	6.35	4.19					432	384